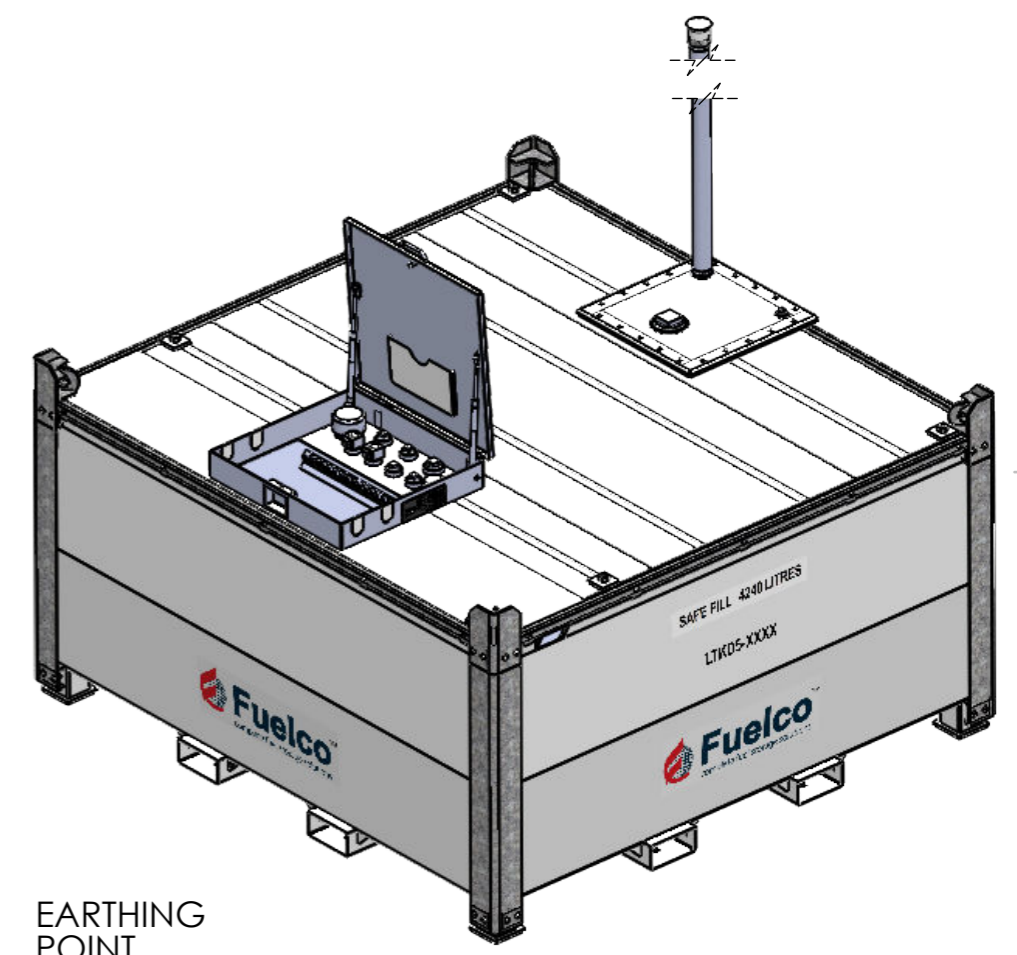
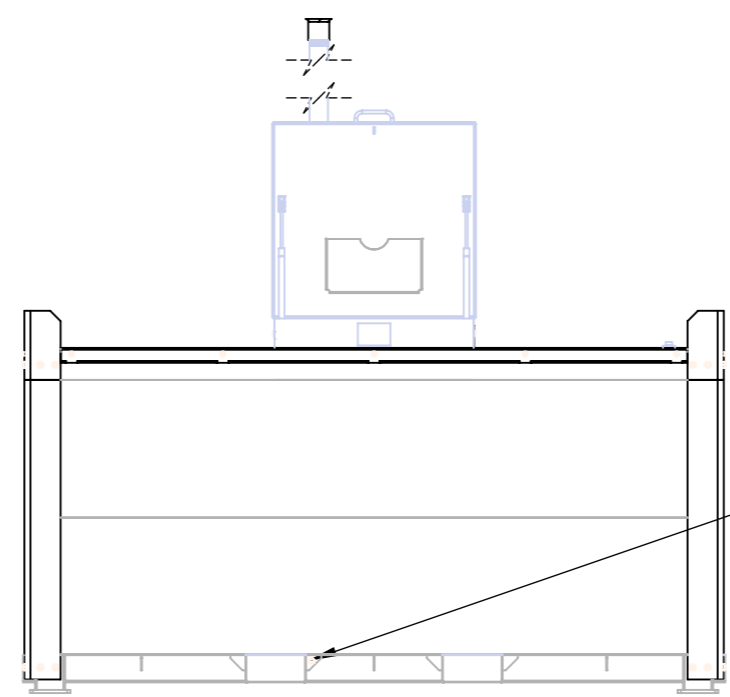
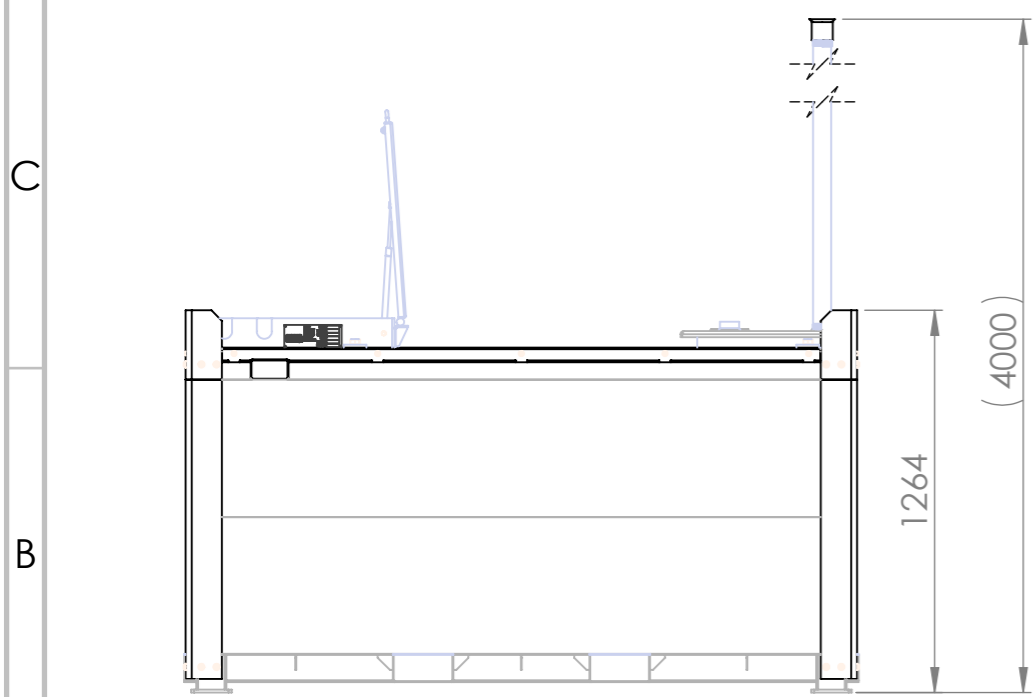


- NOTES:
1. BAFFLED INTERNALLY.
 2. CONTAINMENT AREA FOR PUMP, HOSE AND/OR NOZZLE STORAGE.
 3. DESIGNED TO BE STACKED FOR STORAGE.
 4. VENT PIPE FOR AS/NZ ONLY.

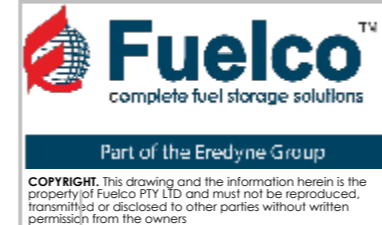
TANK DATA	
DESIGNED TO	AS1692, UL 142
BUILT TO	UL142
GROSS VOLUME	4 460 L (1 178 USG / 981 IG)
SAFE FILL LEVEL	4 240 L (1 120 USG / 932 IG)
PNEUMATIC TEST	21-35 kPa (INNER & OUTER)
TOTAL MASS	1 155 kg (EMPTY)
PAINT	Base Coat: Intergard 345 AkzoNobel (Int.), thickness: 80-100µm
	Top Coat: Interthane 990 AkzoNobel (Int.), thickness: 70-80µm



EARTHING POINT

REV.	DESCRIPTION	DATE	DWN	APP
4	CHANGED OVERALL HEIGHT TO 1264mm	11/11/2022	LIB	HS
3	RE-ISSUED FOR INFORMATION	07/11/2022	LIB	HS
2	RE-ISSUED FOR INFORMATION	20/09/2022	LIB	HS
1	ISSUED FOR INFORMATION	16/06/2022	LIB	HS
REV.	DESCRIPTION	DATE	DWN	APP

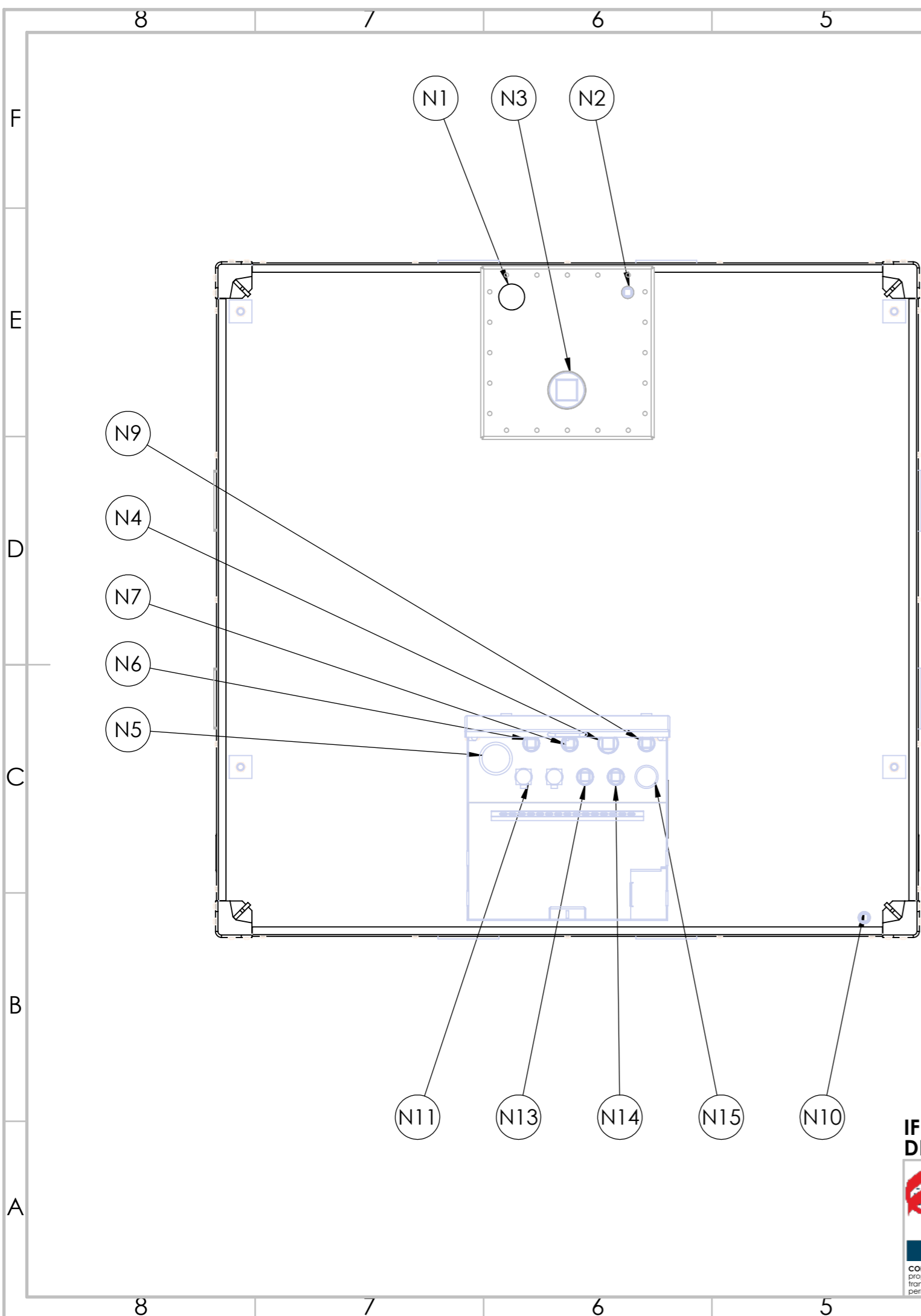
IF IN DOUBT ASK.
DRAWING INFORMATION TAKES PRECEDENCE OVER PARTS LIST



GENERAL NOTES	TOLERANCE
DO NOT SCALE UNLESS STATED OTHERWISE. ALL DIMENSIONS IN MILLIMETERS ALL THREADS ARE METRIC COARSE DEBURR & REMOVE ALL SHARP EDGES	±5.0
TOLERANCES:	±0.1
TYPE	±0.1
GENERAL	±1.0
ONE DECIMAL PLACE	
TWO DECIMAL PLACE	
ANGULAR (°)	

SCALE	NTS
DWN	H SINGH 20/01/2022
MATERIAL	
THICKNESS	
FINISH	

TITLE	DRAWING NUMBER	SHEET 1 OF 2	REV
LTKD5 ASSEMBLY GENERAL ARRANGEMENT	LTKD5-GA		4



NOZZLE NO.	SIZE	CONNECTION TYPE	DESCRIPTION
N1	DN50	BSP-F x 50 LONG	SPARE / FREE-TO-AIR VENT
N2	DN25	BSP-F x 45 LONG	SPARE
N3	DN100	BSP-F x 87 LONG	SPARE
N4	DN50	NPT-F x 50 LONG	PRESSURE/VACUUM VENT
N5	DN80	NPT-M x 75 LONG	FILL C/W DN80 PIPE 15mm FROM FLOOR
N6	DN40	BSP-F x 50 LONG	SPARE
N7	DN40	BSP-F x 50 LONG	SPARE
N8			NOT USED
N9	DN40	BSP-F x 50 LONG	GAUGE
N10	DN25	BSP-F x 45 LONG	INTERSTITIAL SPACE DRAIN POINT
N11	DN40	BSP-F x 50 LONG	SUCTION C/W DN40 PIPE 25mm FROM FLOOR
N12	DN40	BSP-F x 50 LONG	RETURN
N13	DN40	BSP-F x 50 LONG	SPARE
N14	DN40	BSP-F x 50 LONG	SPARE
N15	DN50	BSP-M x 50 LONG	DIP C/W DN50 PIPE CONNECTED TO FLOOR

NOTES:

1. FRONT HATCH LID HIDDEN FOR CLARITY.

**IF IN DOUBT ASK.
DRAWING INFORMATION TAKES PRECEDENCE OVER PARTS LIST**

<p>Part of the Eredyne Group</p> <p><small>COPYRIGHT. This drawing and the information herein is the property of Fuelco PTY LTD and must not be reproduced, transmitted or disclosed to other parties without written permission from the owners</small></p>	<p>GENERAL NOTES DO NOT SCALE UNLESS STATED OTHERWISE:- ALL DIMENSIONS IN MILLIMETERS ALL THREADS ARE METRIC COARSE DEBURR & REMOVE ALL SHARP EDGES TOLERANCES:</p> <table border="1"> <thead> <tr> <th>TYPE</th> <th>TOLERANCE</th> </tr> </thead> <tbody> <tr> <td>GENERAL</td> <td>±5.0</td> </tr> <tr> <td>ONE DECIMAL PLACE</td> <td>±0.1</td> </tr> <tr> <td>TWO DECIMAL PLACE</td> <td>±0.1</td> </tr> <tr> <td>ANGULAR (°)</td> <td>±1.0</td> </tr> </tbody> </table>	TYPE	TOLERANCE	GENERAL	±5.0	ONE DECIMAL PLACE	±0.1	TWO DECIMAL PLACE	±0.1	ANGULAR (°)	±1.0	SCALE	NTS		TITLE
		TYPE	TOLERANCE												
		GENERAL	±5.0												
		ONE DECIMAL PLACE	±0.1												
TWO DECIMAL PLACE	±0.1														
ANGULAR (°)	±1.0														
	DWN	H SINGH	20/01/2022	LTKD5 ASSEMBLY NOZZLE SCHEDULE											
	MATERIAL														
	THICKNESS														
	FINISH			DRAWING NUMBER	SHEET 2 OF 2	A3									
				LTKD5-GA		REV									
						4									